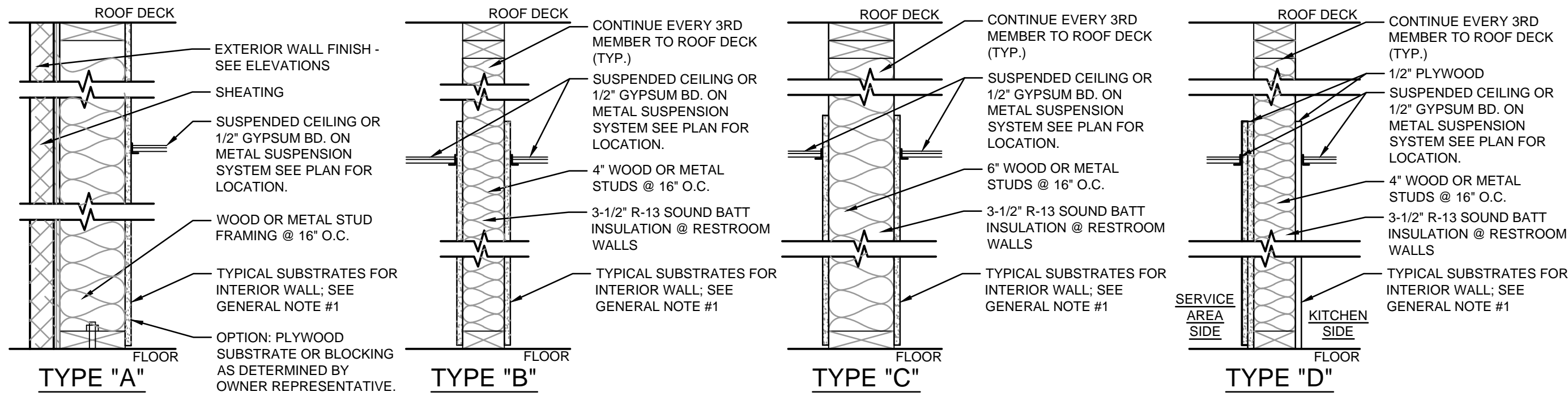


9-B-17-UR

1 FLOOR PLAN

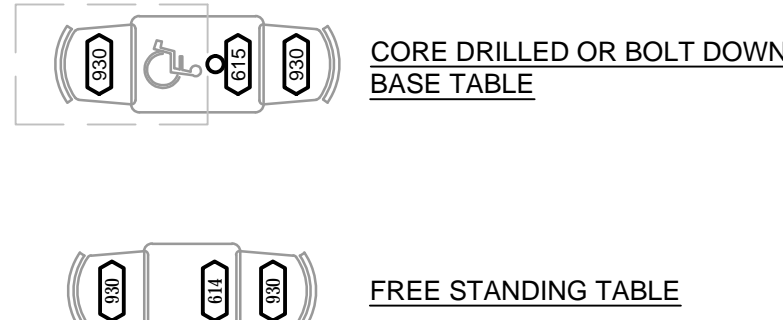
1/4" = 1'-0" NOTE:



- ALL JOINTS BETWEEN THE WALL SURFACES AND THE EDGES OF ATTACHED EQUIPMENT AS WELL AS ALL ANNULAR OPENINGS AROUND PIPES DUCTS OR OTHER CONDUITS WHERE THEY PASS THROUGH WALLS AND FLOOR SHALL BE SEALED WITH A MIXTURE OF STEEL WOOL AND APPROVED CAULK SEALING COMPOUND.
- ENSURE TOP PLATES AND THE JOINTS BETWEEN WALLS AND CEILINGS ARE SEALED.
 - DUCT SHAFT & PIPING PENETRATIONS: OPENINGS FROM CRAWL SPACE AND ATTIC ARE SEALED.
 - ALL SHAFTS: PROPER FLASHING AROUND FLUE AND GAPS SEALED AND CAULKED
 - ALL PENETRATIONS AT EXTERIOR WALLS ARE SEALED INCLUDING VENTS, AND ELECTRICAL CONDUIT & BOXES.
 - PROVIDE CORROSION-PROOF RODENT/BIRD SCREENS (E.G., STEEL MESH) FOR ALL BUILDING OPENINGS THAT CANNOT BE FULLY SEALED AND CAULKED (E.G., VENTILATION SYSTEM INTAKE / EXHAUST OUTLETS AND ATTIC VENT OPENINGS).

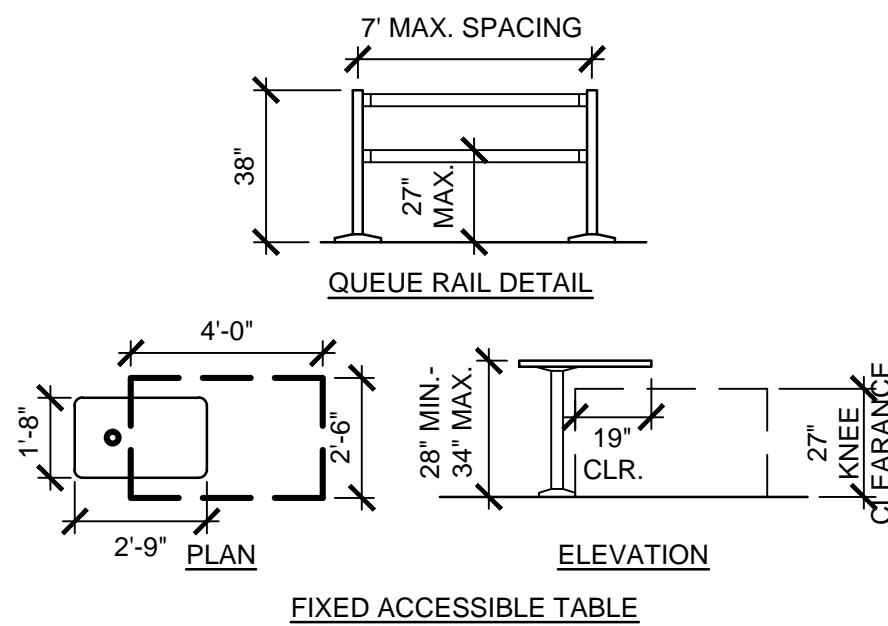
2 PARTITION TYPES

1-1/2" = 1'-0" NOTE:



3 TABLE LEGEND

1/4" = 1'-0" NOTE:



4 ACCESSIBILITY DETAILS

1/4" = 1'-0" NOTE:

GENERAL NOTES:

1. TYPICAL SUBSTRATES FOR INTERIOR WALLS SHALL BE AS FOLLOWS:
KITCHEN AND STORAGE AREAS: 0'-0" TO 3'-0" - 5/8" DUROCK CEMENT BOARD,
3'-0" AND ABOVE - 5/8" PLYWOOD.
SERVICE AREA: 5/8" MIN. PLYWOOD
SALES AND SEATING AREAS: 5/8" GYPSUM BOARD
GENERAL CONTRACTOR SHALL PROVIDE ADEQUATE BLOCKING IN BATHROOMS FOR GRAB BARS, LAVATORIES, HAND DRYERS, MIRRORS, PAPER TOWEL DISPENSERS, SOAP DISPENSERS, AND OTHER ACCESSORIES AS REQUIRED UNLESS OTHERWISE NOTED.
2. DIMENSIONS SHOWN ARE TO THE FACE OF FINISH.
3. REFER TO EQUIPMENT "K" SHEETS FOR INFORMATION REGARDING THE EQUIPMENT AND EQUIPMENT LAYOUT.
4. SEE SHEET A-10.0 FOR DOOR SCHEDULE AND DOOR & FRAME TYPES.
5. THESE PLANS ARE CONSIDERED MINIMUM DUNKIN' BRANDS CORPORATE DESIGN REQUIREMENTS. THE STRUCTURAL DESIGN, FOOTING DESIGN, ADA COMPLIANCE AND GENERAL BUILDING REQUIREMENTS MUST BE EVALUATED AND CERTIFIED BY AN ARCHITECT REGISTERED IN THE STATE WHERE THIS STRUCTURE IS TO BE BUILT.
6. SEE SITE PLAN PROVIDED BY OWNER FOR NUMBER AND LOCATION OF THE FOLLOWING SITE FURNISHINGS: TABLE WITH SEATING, ADA TABLE WITH SEATING, TRASH CAN NEXT TO EXTERIOR SEATING AREA, TRASH CAN WITH CHUTE NEXT TO DRIVE-THRU AREA, AND GROUNDSKEEPER SMOKING MANAGEMENT RECEPTACLE. SEE NATIONAL ACCOUNT SOURCE INFORMATION FOR MANUFACTURER / SUPPLIER.
7. PROVIDE FIRE EXTINGUISHERS, TYPE ABC, WALL HUNG, TOP @ 5'-0" A.F.F. (BY G.C.). - NUMBER AND LOCATION AS DETERMINED BY LOCAL CODE
8. IF LARGER OFFICE IS REQUIRED, EXPAND TOWARD B.O.H. NOT F.O.H. SEEK D.B.I APPROVAL PRIOR TO PROCEEDING
9. REFER TO WEBSITE <http://extranet.dunkinbrands.com> FOR ALTERNATE FLOOR PLAN WITH OPTIONAL SECOND DRIVE-THRU WINDOW
10. BEVERAGE REFRIGERATOR TO BE 54" HIGH WHEN NOT PLACED AGAINST WALL.
11. **INDOOR AIR QUALITY MANAGEMENT REQUIREMENTS:**
 - A. DURING CONSTRUCTION THE USE OF SMOKING/TOBACCO PRODUCTS INSIDE THE BUILDING IS PROHIBITED.
 - B. CONTRACTOR AND SUBCONTRACTORS SHOULD MAKE EVERY EFFORT TO MAINTAIN CLEAN WORK AREAS.
 - C. CONSTRUCTION ACTIVITIES THAT PRODUCE DUST SHOULD TAKE PLACE PRIOR TO HVAC STARTUP/USE, AND EVERY EFFORT SHOULD BE MADE TO DIRECT THESE POLLUTANTS TO THE OUTDOORS WITH FANS.
 - D. MATERIALS THAT ARE ABSORPTIVE SHOULD NOT BE BROUGHT ON-SITE UNTIL THE BUILDING IS SUFFICIENTLY DRIED IN, AND SHOULD BE ELIMINATION FROM THE GROUND AND COVERED WITH VISQUEEN WHILE STORED ON SITE.
 - E. IF THE HVAC SYSTEMS WILL BE USED DURING CONSTRUCTION ACTIVITIES, TEMPORARY FILTRATION (MERV 8) SHOULD BE USED ON ALL RETURN AIR INTAKES, AND THE FILTERS INSIDE THE UNIT SHOULD BE REPLACED PRIOR TO BUILDING TURN OVER.
 - F. ALL INDOOR AIR QUALITY MANAGEMENT POLICIES OUTLINED ABOVE ARE PHOTOGRAPHED AT 25%, 50%, AND 75% PROJECT COMPLETION TO CONFIRM MEASURES WERE FOLLOWED.
12. **CONSTRUCTION WASTE RECYCLING REQUIREMENTS:**
 - A. ALL CONSTRUCTION-RELATED RECYCLABLE WASTE SHOULD BE RECYCLED/REUSED OR OTHERWISE DIVERTED FROM LANDFILL WHENEVER POSSIBLE.
 - B. AT MINIMUM ALL CONCRETE, METAL, AND PLASTIC THAT MEETS LOCAL RECYCLING STANDARDS SHOULD BE RECYCLED.
 - C. WHERE LOCAL MUNICIPALITIES OR VENDORS OFFER COMMINGLED RECYCLING OPPORTUNITIES TO HELP ACHIEVE OVER 50% CONSTRUCTION WASTE DIVERSION RATE FROM LANDFILL, FRANCHISEE SHOULD PURSUE.

PLAN NOTES:

1. CASEWORK BY OTHERS.
2. SLIDING DRIVE-THRU WINDOW BY READY ACCESS OR QUIKSERV CORP. - SEE DUNKIN' BRANDS NATIONAL ACCOUNT SPECIFICATIONS
3. ROOF LADDER - WHERE ALLOWED BY CODE
4. JANITOR'S SINK - PROVIDE DEDICATED WATER SUPPLY FOR P&G DISPENSER (SEE NATIONAL ACCOUNTS). P&G EQUIPMENT INSTALLED BY VENDOR- SEE DETAIL 12/P-3.0
5. RECESS MOUNT HAND DRYER W/ DBI BRANDING AND SUSTAINABILITY MESSAGE BY EXCEL DRYER INC. SEE NATIONAL ACCOUNTS; (413-525-4531)
6. P.O.S. OUTLET BOX (48" A.F.F.) WITH 1/2" CONDUIT W/ PULLSTRING TO CEILING
7. PROVIDE SHELF AND STRAPPING FOR TANK WATER HEATER (WHEN USED) MOUNTED OVER MOP SINK- SEE DETAIL #4, SHT. A-9.0 (OR PER LOCAL CODE IF MORE STRINGENT)
8. BOLLARD - SEE DTL. #2, SHT. SP-1.0
9. 3 COMPARTMENT SINK W/ 2 INTEGRATED DRAIN BOARDS- PROVIDE DEDICATED WATER SUPPLY FOR P&G DISPENSER (SEE NATIONAL ACCOUNTS). P&G EQUIPMENT INSTALLED BY VENDOR- SEE DETAIL 2/P-3.0
10. FROST PROOF HOSE BIB
11. 2" X 2" BRUSHED ALUMINUM CORNER GUARDS, 6'-2" LONG (TYPICAL THROUGHOUT KITCHEN)
12. ELECTRICAL PANELS; SEE ELECTRICAL SHEETS
13. HAND SINKS ARE REQUIRED WITHIN A 25 FT. RADIUS OF ALL WORK STATIONS IN SERVICE AREAS AND KITCHEN (OR PER LOCAL CODE IF MORE STRINGENT)
14. SEE DTL. #6, SHT. A-8.1 FOR ENLARGED BATHROOM AREA PLAN
15. ELECTRICAL METER - PROVIDE APPROPRIATE CONNECTION TO ELECTRICAL PANELS AS PER FEDERAL, STATE, AND LOCAL CODES
16. PROVIDE DIRECT LINE W/ TEMPERATURE REGULATOR VALVE FROM HWH TO ALL HAND WASHING SINKS
17. TANK TYPE HOT WATER HEATER (SEE SPECS.) MAY BE USED IN PLACE OF RINNAI UNIT - COORDINATE EXACT SIZE W/ LOCAL REQUIREMENTS. SEE P-3.0 FOR CONTACT INFO
18. G.C. TO PROVIDE ANCHOR BOLTS FOR SLAB MOUNTED SAFE IN OFFICE- REFER TO SPECIFICATIONS TO BE PROVIDED BY FRANCHISEE.
19. WATER FILTRATION SYSTEM (BRANCH OFF MAIN LINE) FOR COFFEE BREWING EQUIPMENT, ICE MACHINES; LOCATE ABOVE WATER METER
20. OPTIONAL SOLAR SHADES AT GLAZING. SEE CONSTRUCTION SPECIFICATIONS AND NATIONAL ACCOUNTS SUPPLIER ON EXTRANET.
21. 1/2" BRUSHED ALUMINUM CORNER GUARD
22. CORE DRILL. SEE DETAILS #4/A-1.0 & #1/A-9.0
23. PROVIDE SOLID BLOCKING IN WALL AT SWING GATE
24. CANOPY OVERHEAD
25. OPTION TO UTILIZE BLOCKING AT WALL SHELVING LOCATIONS OR CONTINUOUS PLYWOOD SUBSTRATE- CLARIFY WITH OWNER'S REPRESENTATIVE

LAYOUT NOTES:

1. ARCHITECT & G.C. TO ENSURE 40" MINIMUM CLEAR ACCESS INTO AND THROUGHOUT THE STORE FOR DELIVERY OF LARGE EQUIPMENT ITEMS.
2. FOR STORES WITH CELLARS, THE FLOOR, WALL, AND CEILING FINISHES WILL BE THE SAME AS THE FINISHES FOR THE KITCHEN. REFER TO THE FINISH SCHEDULES ON SHEETS A-2.0, A-3.0 AND A-8.0 FOR THE PROPER FINISHES.
3. FOR LOCATIONS WITH INTERIOR WALK-INS, PROVIDE FLOOR DRAIN WITHIN 5' FT. OF WALK-IN FOR CONDENSATE DRAIN CONNECTION FROM INTERIOR OF WALK-IN (TYP.).
4. FOR LOCATIONS WITH INTERIOR WALK-INS, PROVIDE 2" MIN. AIR SPACE BETWEEN WALK-IN AND ALL ADJACENT WALLS.
5. FOR NON-DEPRESSED SLAB FOR WALK-IN BOX AN INTERIOR RAMP SHALL BE PROVIDED.
6. CORE DRILL TABLES SHOWN ON PLAN TO BE LOCATED AT ENDS OF SEATING AREA TO ACT AS 'CONTROL' TABLES

ADA NOTES:

THE GENERAL CONTRACTOR SHALL ACQUAINT HIMSELF WITH THE BARRIER FREE REQUIREMENTS FOR THE APPLICABLE STATES AND THE AMERICAN DISABILITIES ACT (ADA) AND SHALL ENSURE THAT THIS FACILITY WILL BE ACCESSIBLE ACCORDING TO THE STRICTER REQUIREMENTS OF THE APPLICABLE STANDARDS. THE FOLLOWING IS A PARTIAL LIST OF REQUIREMENTS.

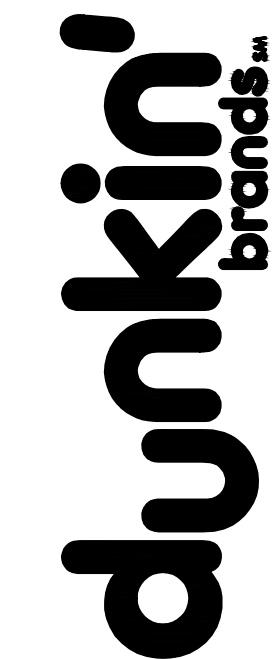
1. DOOR HARDWARE SHALL BE MOUNTED BETWEEN 36" AND 42" ABOVE FLOOR AND BE LEVER TYPE.
2. TOILETS:
 - A. LAVATORY TO HAVE LEVER HANDLES, SELF METERING FAUCETS OR SPRING FAUCET. FAUCETS SHALL BE SET TO REMAIN OPEN FOR 10 SECONDS MINIMUM.
 - B. A COAT HOOK 48" ABOVE THE FLOOR SHALL BE MOUNTED ADJACENT TO THE BARRIER FREE STALL DOOR.
 - C. LOCATE THE WATER CLOSET 16" TO 18" FROM THE CENTER LINE OF THE FIXTURE TO THE WALL. THE SEAT WILL BE 17" TO 19" ABOVE THE FLOOR TO THE TOP OF SEAT. FLUSH HANDLE TO BE ON EXPOSED SIDE OF WATER CLOSET.
 - D. PROVIDE ONE 42" AND ONE 36" LONG x 1 1/2" OUTSIDE DIAMETER PEENED GRAB BARS, 1 1/2" FROM THE WALL WITH ONE BEHIND AT 12" FROM CENTER LINE OF WATER CLOSET ON ONE SIDE. ONE ADJACENT TO AT 12" FROM THE WALL 33"-36" PARALLEL TO AND ABOVE THE FLOOR.
 - E. LAVATORY TO BE MOUNTED 34" MAX. ABOVE THE FINISHED FLOOR TO RIM WITH KNEE SPACE OF 30" IN WIDTH AND 27" IN CLEAR HEIGHT. (29" CLEAR UNDER FRONT EDGE)
 - F. INSTALL MIRROR 40" MAX. ABOVE THE FINISHED FLOOR TO BOTTOM EDGE OF REFLECTING SURFACE (MIRROR GLASS BOTTOM) AND 72" TO TOP.
 - G. DISPENSERS TO BE MOUNTED A MAXIMUM OF 42" ABOVE THE FLOOR TO ALL OPERATING OR DISPENSING SLOTS.
 - H. TOILET PAPER DISPENSERS MOUNTED 19" MIN. TO CENTER LINE ABOVE THE FLOOR AND 7" MINIMUM AND 9" MAXIMUM FROM FRONT EDGE OF WATER CLOSET MEASURED TO THE CENTERLINE OF THE DISPENSER



3 E. Main St.,
Troy, OH 45373
p 937.760.3884
mtwiss@gomtstudio.com

ENGINEER OF RECORD:
Eric M. Aielli, PE
31 Henry St.
Dayton, OH 45402
937.486.4233

MEP Consultant:
MSW Consulting LLC
P.O. Box 455 | New Albany, OH | 43054
contactus@msw-llc.com

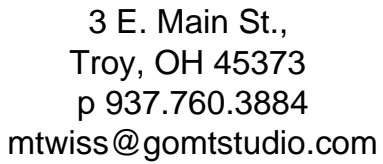


Ground Up for
Dunkin' Donuts
Western Ave.
Knoxville, TN 37921

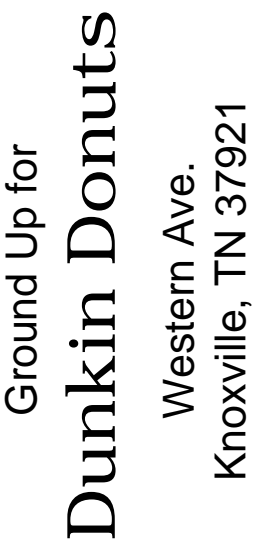
ISSUED / REVISED DATE
50% REVIEW SET 06.01.17

Floor Plan
Notes &
Partition Types
A-1.0

NOTE: DRAWINGS ARE NOT TO SCALE IF SHEET IS PLOTTED ON 11" x 17"



ENGINEER OF RECORD:
Eric M. Atteli, PE
31 Henry St.
Dayton, OH 45402
937.486.4223



MTSTUDIO PROJECT NUMBER: 17006

[illegible]

Exterior Elevations A-5.0



1/4" = 1'-0"	NOTE:
--------------	-------

REAR ELEVATION

1/4" = 1'-0"	NOTE:
--------------	-------



1/4" = 1'-0"	NOTE:
--------------	-------

RIGHT ELEVATION

1/4" = 1'-0"	NOTE:
--------------	-------

9-B-17-UR

NOTE: DRAWINGS ARE NOT TO SCALE IF SHEET IS PLOTTED ON 11" x 17"